

ROTORCOMP
VERDICHTER

Quality.Our DNA

Origin From Germany

Compressor System Expert

To Serve The World





IN RETROSPECT

ROTORCOMP is a member of the BAUER GROUP – an efficiently structured family enterprise which has over 60 years experience in the manufacture of compressors. BAUER started producing screw compressors as early as 1965. Naturally we went through a lot of innovative changes since then:

- › 1978 Development of our first own screw compressor with “ROLLING PROFILE®”
- › 1980 Foundation of ROTORCOMP VERIDICHTER GmbH in Munich, Germany
- › 1991 Delivery of the first encapsulated screw compressor NK 40
- › 1996 Complete product line of air ends (B-series) from 5.5 up to 110 kW (up to 15 barg)
- › 1998 Complete product line of compact units (NK-series) from 5.5 up to 45 kW (up to 15 barg)
- › 1999 ROTORCOMP delivers more than 10.000 screw units per year, founded shanghai rotorcomp screw compressor company in shanghai city, China
- › 2000 Delivery of the first serial booster module MK 80 (up to 40 barg, 48 kw)
- › 2002 Start up of our new state of the art factory UNICCOMP in the south of Munich for production of low and medium pressure screw compressors blocks – and compact units, high and medium pressure piston compressor blocks as well as various components
- › 2006 Formation of the business unit SCREW COMPRESSOR TECHNOLOGY within the BAUER GROUP; responsible for marketing & sales, product development and production of screw compressors





- 2007 Expansion of our factory UNICCOMP to increase production capacity for machining operations and rotor production for screw compressors
- 2007 Start up of the new test centre at UNICCOMP for endurance tests of new or modified screw compressors for worldwide approval and continuous monitoring of serial production to ensure highest quality Made in Germany
- 2007 ROTORCOMP delivers more than 30.000 air ends and compact units per year to the world market and is a leading supplier of oil-injected screw compressors for OEM customers
- 2010 30 Years of INNOVATION
Introduction of 3 new and innovative product generations to the world market:
EVO oil-injected air ends
EVO -NK oil-injected compact units
ETC -SV/IV catalytic converter for oil-free air class 0
- 2013 The new model of screw units unveiled service for the whole world
- 2104 delivered more than 36,000 screw ends
- 2015 Building joint venture with RIMA(HONGKONG)International co., ltd and invested to develop oil free scroll compressor in Zhejiang China.
- 2016 Introduce revolutionary design for new screw compressor and VSD compressor ,more energy-saving than 18-25% than last generation compressor,more easily maintain and driving protection system to keep more safe, durable and stable in the extremely working enviroment.
- 2017 Develop and release the new oil free compessor and high pressure over 30bar,40bar screw compressor to the market for PET,food&beverage, precision machinery industries etc



HIGH END NK SERIES SCREW COMPRESSOR

Hot sale! Oil Lube Rotary Screw Air Compressor

Description:

1. World-leading integrated screw air end
2. Good environmental adaptability
3. Extraordinary cooling system design
4. Economic running costs
5. ISO, TUV, GA, SGS, CE and MA certificates



INTEGRATED COMPONENTS ARE

- >> EVO oil injected air end with rolling profile
- >> Intake valve with control unit and air filter
- >> Oil reservoir and oil separation system with coalescing cartridge(e)
- >> Oil filter and oil thermostatic valve
- >> Minimum pressure and non-return valve
- >> Various options available such as safety valve, oil level sight glass, maintenance indicators



Model	Capacity m ³ /min*					Power (Kw)	Weight Kg	Noise dB (A) **	Dimension L×W×H(mm)
	7 bar	8 bar	10 bar	13 bar	15 bar				
LGFD-7.5	1.30	1.20	1.04	0.90	0.80	7.5	265	65±3	750×750×100
LGFD-11	1.79	1.70	1.58	1.32	1.17	11	350	65±3	950×850×1300
LGFD-15	2.45	2.40	2.15	2.00	1.65	15	360	67±3	950×850×1300
LGFD-18.5	3.10	3.00	2.80	2.50	2.10	18.5	535	70±3	1200×850×1300
LGFD-22	3.69	3.60	3.20	2.75	2.45	22	550	70±3	1200×850×1300
LGFD-30	5.20	5.00	4.50	3.70	3.25	30	640	72±3	1200×850×1300
LGFD-37	6.50	6.40	5.80	4.80	4.30	37	810	72±3	1380×1000×1300

* Free air delivery for the complete package in accordance with ISO 1217, Appendix C, at 20°C ambient temperature and maximum pressure.

**Emitted sound level as per PN8NTC2.3.

Note:

1. Can be customized according to the user's requirements: air-cooled / water-cooled type, oil content, the special outline dimension design according to need to order and technical agreement shall prevail;
2. Frequency converters (optional);
3. 1 year warranty for compressor unit, 5 years warranty for air end.

ADVANTAGES OF ROTORCOMP -COMPACT UNITS



Advantages for Manufacturers

- Reduced design costs increase of profitability
- High operation reliability
- Small space requirement with compact design
- Customised for OEM
- Pre-define total costs
- Lower assembly costs
- Simplified service and maintenance
- Simplified purchase of technical equipment
- Competitive design package
- Solid cast iron low operation noise
- Simplified and safe handling/application high technical standard
- Lower assembly costs
- Variable applications

Made in Germany

ADVANCED DESIGNS FOR EXCELLENT PERFORMANCE

Multi-touch control,unmanned operation,intelligent operation;
Main and key parts all introduce imported brands to ensure that control system is reliable;
With AD/DB,continuous three operation modes to minimize the operating costs;
Phase sequence protection, motor overload protection function;
Automatic start/stop function;
Air flow automatic adjustment function;
Overpressure,overtemperature automatic alarm and shutdown protection function;
Oil-air separator,filters high pressure drop alarm protection function;
Can realize local,remote and multiple compressors joint control.

1. Air end-made in Germany

Ultimate efficiency and reduced noise of advantages of our new EVO® technology of air end made in Germany

2. Cooling system

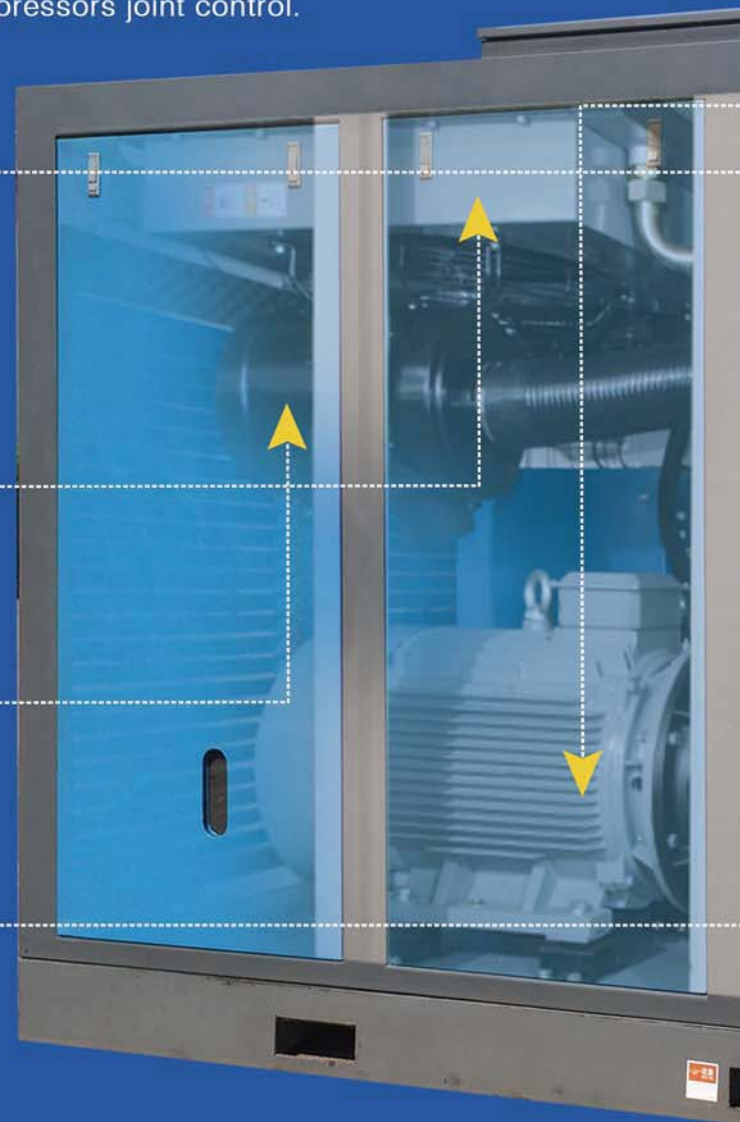
Optimized air-cooled system, higher-efficient fan motor and oversized cooler german designed with excellent enegy-saving performance, durable in high-temp working environment

3. Air Filter

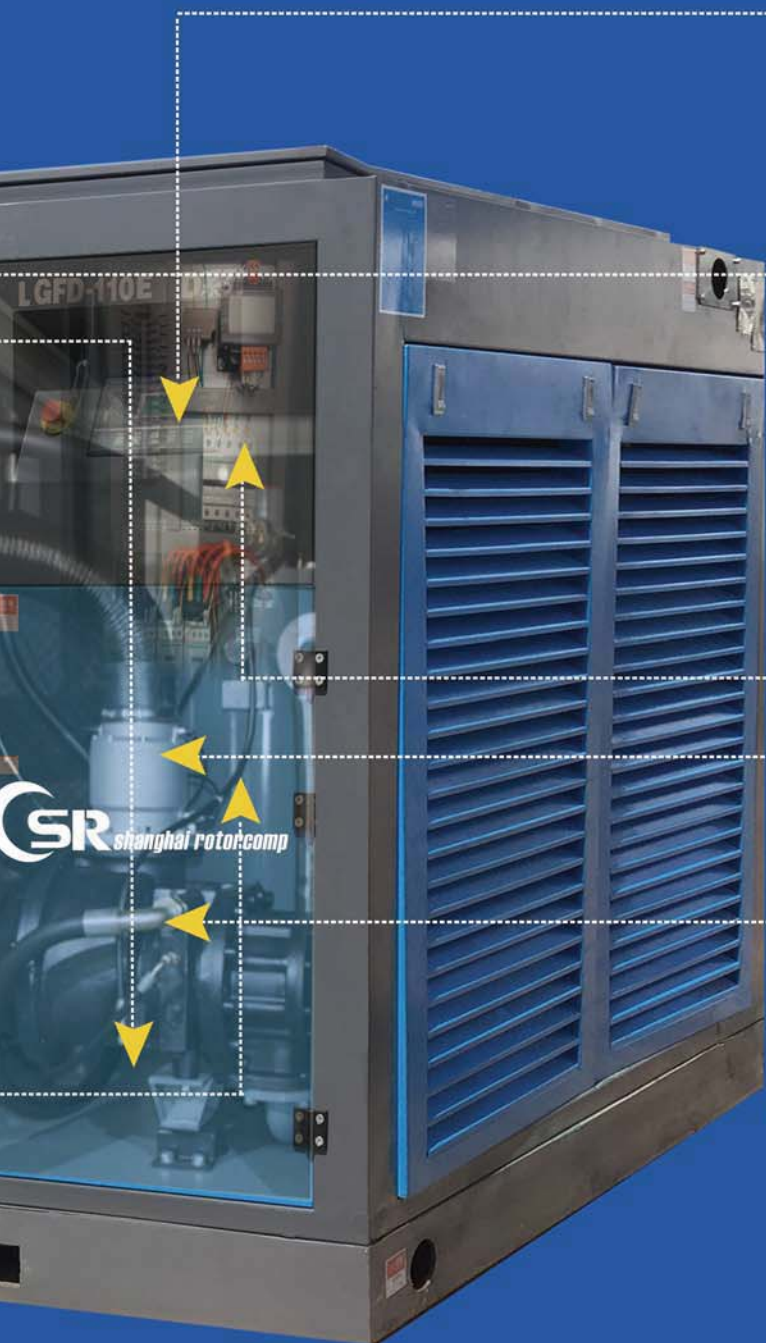
It has 99.99 % filtration efficiency and fully complies with ISO 5011 standards.

4.Oil Separation System

The air purity meets ISO standard 8573-1:1991, Class 3 Oil Residues.



NS FOR EXCELLEN



5. Intelligent control System

Simply control with all the parameters show on the screen, high precisely durable button and remote control optional. Coloful multi-touch screen as option.

6. Higher efficient energy-saving motor

IP55 IE-3 motor in CE &MEPS standard high temperature F class, Optimized fan and fan cover designs ensure the optimum cooling and quieter operation. Over sized cast iron conduit boxes make connections easy. Safe and reliable operation in high-temp working environment.

7. New switch cabinet

No fuse for control line: Stable and reliable protection for exposed terminals: safety
High quality transformer: CE; Stable and reliable
High quality terminals: CE; Stable and reliable

8. Unique driving guard system

The special design to keep the driving system more safe and longer lifereliable

9. Intake valve

Advacned dsgn to adjust volume 0-100% smoothly, less air pressure lost or oil leaking.
Utilize a normally closed inlet valve, which provide very smooth Y- Δ starting. It's advanced design also results in the very low inlet pressure drop, thus more air flow and higher compressor efficiency.

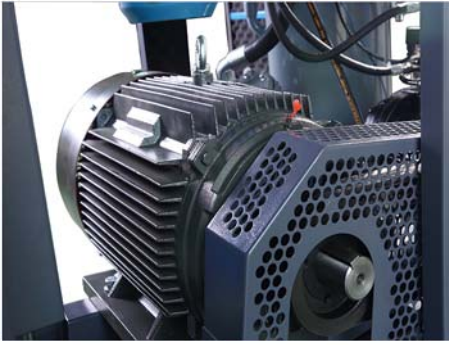
HIGH END EVO SERIES SCREW COMPRESSOR

The screw air end of compressor **Made In Germany**

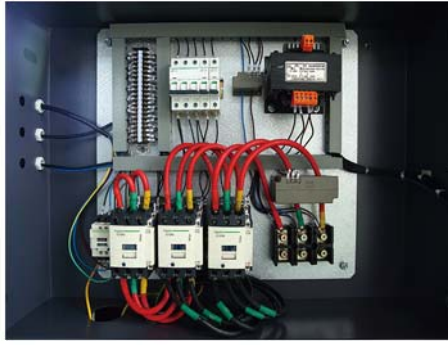
Advantages of our new EVO technology

- > New ROLLING PROFILE– ultimate efficiency with reduced noise
- > Long life cycle due to increased bearing dimensions and wear-free ROLLING PROFILE
- > Wide operating pressure range from 5 to 15 barg
- > High quality manufacturing and assembling – “Made in Germany”
- > Quality assurance – bench test of every air end before leaving our factory
- > Easy application selection with our new ROTORCOMP-SIZING AIR software
 - Suitable for all types of drive driving motors
 - Drive options: Belt drive, direct drive, internal gear drive
 - Base and face-flange mounting

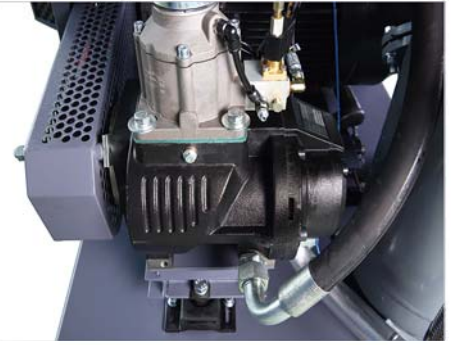




1.Special driving guard system to keep long-term working more safe



2.Pick up French White High-end Schneider contactor,more durable in extreme enviroment



3.Advanced oil &Air system to keep higher efficient

Model	Capacity(m3/min)*				Power(kw)		In/outlet	Noise dB(A)**	Dimension LxWxH in mm	Weight kg
	8bar	10bar	13bar	15bar	Motor	Motor(Fan)				
LGFD-5.5	0.87	0.75	0.61	0.53	5.5	0.09	G3/4	69	750×750×1000	270
LGFD-7.5	1.2	1.04	0.9	0.8	7.5	0.09	G3/4	69	750×750×1000	290
LGFD-11	1.7	1.58	1.32	1.17	11	0.18	G3/4	70	950×850×1300	350
LGFD-15	2.4	2.15	2.0	1.65	15	0.18	G3/4	70	950×850×1300	360
LGFD-18.5	3	2.8	2.50	2.1	18.5	0.75	G1	72	1200×950×1300	565
LGFD-22	3.6	3.2	2.75	2.45	22	0.75	G1	72	1200×950×1300	600
LGFD-30	5	4.5	3.7	3.25	30	0.75	G1	72	1200×950×1300	680
LGFD-37	6.4	5.8	4.8	4.3	37	1.5	G1-1/4	72	1380×1000×1300	830
LGFD-45	7.6	7	5.8	5	45	1.5	G1-1/4	72	1380×1000×1300	1045
LGFD-55	10	9	7.8	6.5	55	1.5	G2	76	1700×1200×1700	1350
LGFD-75	13	11.5	9.8	8.8	75	1.5	G2	76	1700×1200×1700	1570
LGFD-90	16.5	14.3	12	11	90	2.2	G2	79	1700×1200×1700	1760
LGFD-110	20.5	17.5	14.5	13.5	110	2.2	G2-1/2	79	1860×1350×1750	1870
LGFD-132	23.5	21	18.5	16	132	2.2	G2-1/2	79	1860×1350×1750	1970

* Free air delivery for the complete package in accordance with ISO 1217, Appendix C, at 20°C ambient temperature and maximum pressure. **Emitted sound level as per PN8NTC2.3.

Note:

1. Can be customized according to the user's requirements: air-cooled / water-cooled type, oil content, the special outline dimension design according to need to order and technical agreement shall prevail;
2. Frequency converters (optional);
3. 1 year warranty for compressor unit, 5 years warranty for air end.

NEW ROTORCOMP SIZING AIR SOFTWARE

- > Recommends the most efficient EVO types
- > Calculates performance data
- > Indicates technical limits
- > Provides essential information for your drive
- > Determines important data for your cooling system



VSD SCREW COMPRESSOR

ROTORCOMP VSD SERIES SCREW COMPRESSOR



Adapting the amount of free air delivered to compressed air demand is the most economical operating method where demand for compressed air fluctuates considerably or where the stored volume is very small or when operating below peak load.

Benefits of frequency control

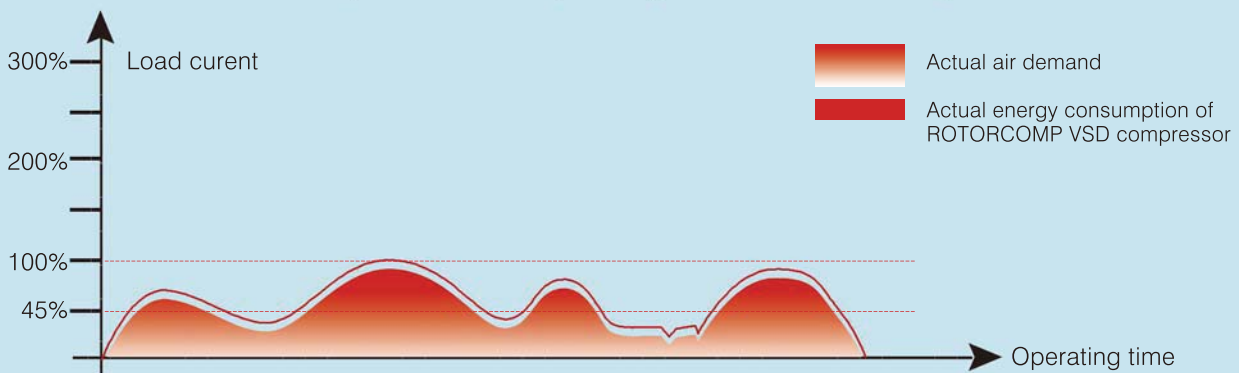
- > Smooth starts and stops within seconds
- > Flexible adaptation of f.a.d.
- > No power-peaks during start-up (energy saving!)
- > Continuous volume flow regulation from 25 to 100 percent
- > Minimisation of wear and maintenance costs
- > Nearly no idling (energy saving!)



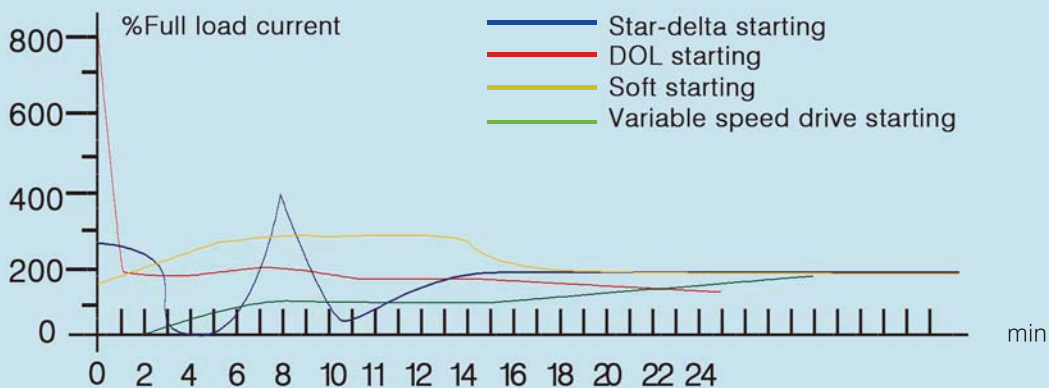
Reduce Energy Consumption

The costs of power consumption accounts for 70% or more of all costs during the operation. The electric charges of running air compressor accounts for more than 40% of the all electric charges in the factory. The requirements of compressed air fluctuates violently in different time every day, different days every week or different months every year, the range of fluctuation is 40% to 80%. Rotorcomp has the advanced VSD air compressor, the compressed air can meet the user's requirement exactly. When the user needs less air delivery, VSD will reduce the capacity and reduce the power consumption at the same time .

standard compressor capacity and electricity



Starting current comparison



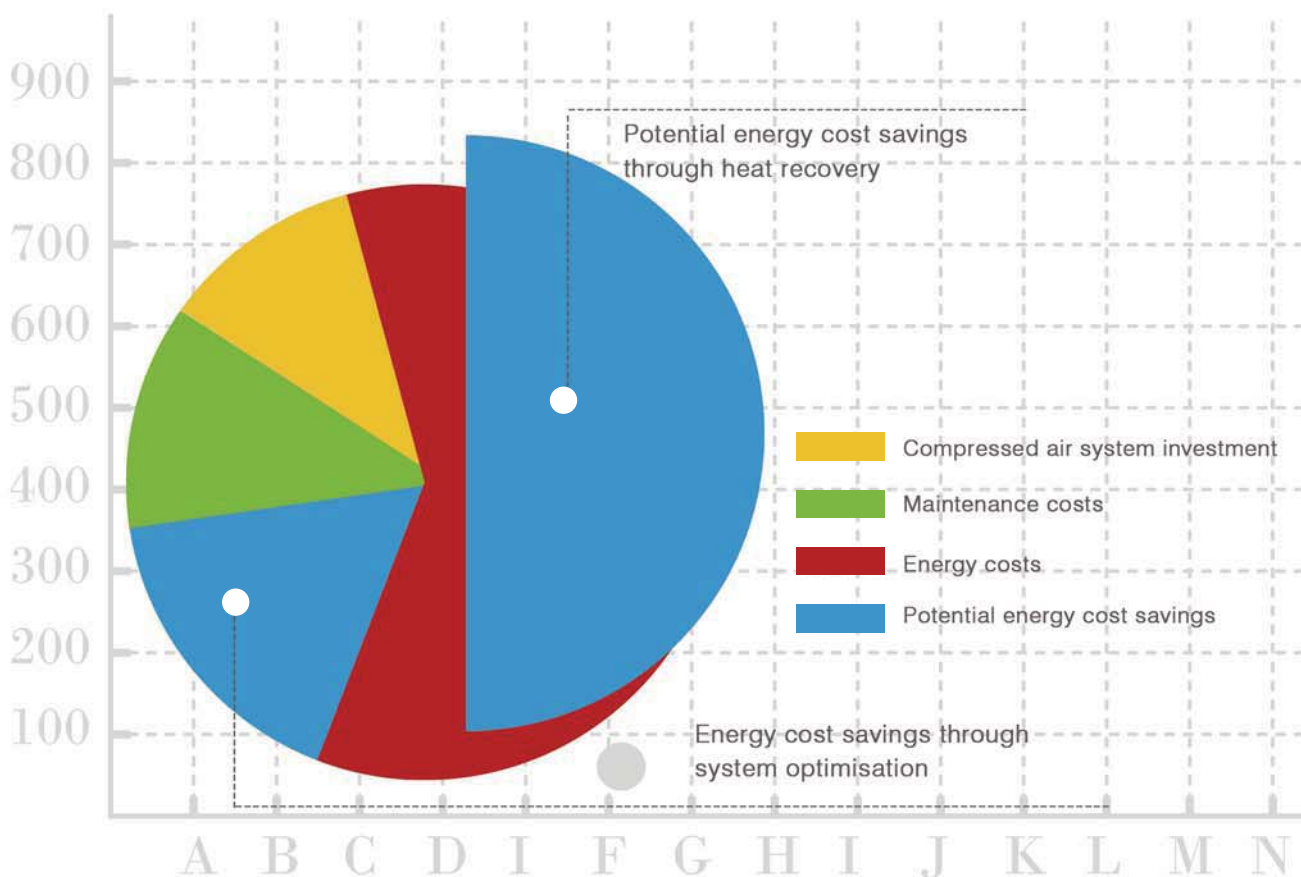
The frequency converter is designed for soft starts and stops of the drive motor. Even during the switch-on phase, the starting current does not exceed its rated current which, in case of extreme drive performance, can be of some advantage in the supply of energy.

- >Perfect protection:lack of phase protection,inter short circuit protection,short circuit to earth protection,overcurrent protection,overvoltage protection,undervoltage protection,overload rotection,overheat protection and motor heat protection;
- >Powerful overload capacity and unique technology for limiting current;
- >Proprietary efficient control program;
- >Wide frequency design(15-60Hz), control range wider;
- >Variable frequency motor with 15-60Hz adjustable range.



ADVANTAGES OF SHANGHAI ROTORCOMP VSD COMPRESSOR

1. The air end made In Germany
2. Wider frequency change from 15-60Hz to keep more safe and lower cost after long-term working than most of suppliers in the world
3. Only choose best IP55 VSD main motor with 1.2 service factor and VSD fan motor for cooling system, reach higher energy-saving standard: CN.CE-1306-06/16
4. Patented driving guard system
5. Multi-touch controller to make it easier to control



PRINCIPLE OF VECTOR CONTROL VSD TECHNOLOGY:

The frequency control allows for a very large FAD regulation from 25% up to 100%. Adaptation to differing compressed air requirements is assured by infinite speed adjustment of the drive motor which is actuated by a frequency converter with simultaneous speed adjustment of the compressor air end.

Due to the extensive range of frequency adjustments, it is possible, even in case of little air consumption, to adapt the air delivery to the actual demand in compressed air and to almost completely avoid switching and idle operation.

Model	Air flow(m ³ /min)*				Power(kw)		In/outlet	Noise dB(A)**	Dimension L×W×H in mm	Weight kg
	8bar	10bar	13bar	15bar	Motor	Motor _(Fan)				
LGFD-5.5 VP	0.22-0.87	0.19-0.75	0.16-0.61	0.14-0.53	5.5	0.09	G3/4	69	800×750×1000	280
LGFD-7.5 VP	0.30-1.20	0.25-1.04	0.25-0.90	0.20-0.80	7.5	0.09	G3/4	69	800×750×1000	300
LGFD-11 VP	0.45-1.70	0.40-1.58	0.33-1.32	0.30-1.17	11	0.18	G3/4	70	950×850×1300	360
LGFD-15 VP	0.60-2.40	0.54-2.15	0.50-1.84	0.42-1.65	15	0.18	G3/4	70	950×850×1300	370
LGFD-18.5 VP	0.75-3.00	0.73-2.80	0.63-2.50	0.53-2.10	18.5	0.75	G1	72	1200×950×1300	575
LGFD-22 VP	0.90-3.60	0.80-3.20	0.70-2.75	0.65-2.45	22	0.75	G1	72	1200×950×1300	610
LGFD-30 VP	1.25-5.00	1.15-4.50	0.95-3.70	0.85-3.25	30	0.75	G1	72	1200×950×1300	780
LGFD-37 VP	1.60-6.40	1.45-5.80	1.20-4.80	1.10-4.30	37	1.5	G1-1/4	72	1380×1000×1300	920
LGFD-45 VP	1.90-7.60	1.75-7.00	1.45-5.80	1.25-5.00	45	1.5	G1-1/4	72	1380×1000×1300	1065
LGFD-55 VP	2.50-10.0	2.25-9.00	2.00-7.80	1.65-6.50	55	1.1	G2	76	1700×1200×1700	1370
LGFD-75 VP	3.25-13.0	2.90-11.5	2.45-9.80	2.20-8.80	75	1.1	G2	76	1700×1200×1700	1590
LGFD-90 VP	4.20-16.5	3.80-14.3	3.00-12.0	2.75-11.0	90	2.2	G2	79	1700×1200×1700	1790
LGFD-110 VP	5.20-20.5	4.50-17.5	3.70-14.5	3.50-13.5	110	2.2	G2-1/2	79	1860×1350×1750	2040
LGFD-132 VP	5.90-23.5	5.30-21.0	4.75-18.5	4.00-16.0	132	2.2	G2-1/2	79	1860×1350×1750	2180

* Free air delivery for the complete package in accordance with ISO 1217, Appendix C, at 20°C ambient temperature and maximum pressure. **Emitted sound level as per PN8NTC2.3.

Note:

1. Can be customized according to the user's requirements: air-cooled / water-cooled type, oil content, the special outline dimension design according to need to order and technical agreement shall prevail;
2. 1 year warranty for compressor unit, 5 years warranty for air end.



LGCD SERIES DIRECT DRIVEN SCREW COMPRESSOR

Very Competitive Pricing

Low Capital Cost + Low Operating Cost + Exceptional Reliability & Efficiency =
Economical Cost



SCREW ROTOR PROFILE DESIGN FEATURES:

First, the curved face of the rotors engaged fully, thus contributing to the formation of a hydrodynamic lubrication film, reducing the contact zone of the lateral leakage, improve compressor efficiency; as well as to improve the processing, test performance of the rotor.

Second, using the design ideas of bigger rotor, bigger bearing, low-speed ", speed lower than other brands up to 30 ~ 50%, this could reduce noise and vibration, reducing the compressed air temperature and improve the rigidity of rotor and prolong its life, reduce sensitivity to the impurity and the oil carbide.

Third, fully meet or exceed the national standard GB19153-2003 "air compressors energy efficiency limit !



DESCRIPTION:

1

1. Drives and electrics

The almost loss-free power transmission guarantees reliable, high-performance compressor operation. The regular maintenance requirement is reduced to lubrication of the motor. All the electronic components are brand products of leading manufacturers.

2

2. Air end block – reliable centrepiece – Design in Germany

The centrepiece of the compressor is the air end, which is constructed and manufactured with the most modern production methods in Germany. The optimal air end for your compressor can be used on a modulating basis. In frequency-controlled units, where the operating pressure changes, adjustments can also be made on the frequency controller to optimally adjust the speed of the compressor to the compressor performance.

3

3. Electric motor

Only electric motors from well-known manufacturers of protection class IP54/IP23 are used. As a standard, the drive motors are monitored both thermally (via the thermistor of the motor) as well as electronically

4

4. Oil separation system

Compressors up to 132 kW are equipped with external separators that can be changed in a simple spin-off/spin-on process. Larger units have an internal separator cartridge. Due to the excellent separation efficiency of the system as a whole, the compressors can be used in the pressure range of 5.0 to 15.0 bar. Special pressures on request.

5

5. Oil circuit

The amount of oil in the units is determined in such a way as to extend the oil change intervals (depending on ambient conditions). An oil level sensor is integrated as standard and is read by the controller. All the units in this series have a horizontal oil separation vessel in which the oil is separated from the compressed air highly efficiently at low speeds.





No.	Model	Capacity (m3/min)	Working pressure (Mpa)	Power (kw)	Noise dB (A)	Driven type	outlet temp	oil content	Outlet conn.	Dimension	Weight (kg)
1	LGCD-75A	1.2	0.7	75	70±3	V belt/Direct	Ambient temperature +10°C	1-2ppm	G3/4	900×700×940	190
	LGCD-75B	1.15	0.8								
	LGCD-75C	1	1								
	LGCD-75D	0.75	1.3								
	LGCD-75E	0.6	1.5								
2	LGCD-11A	1.7	0.7	11	70±3	V belt/Direct	Ambient temperature +10°C	1-2ppm	G1	1060×700×1200	350
	LGFD-11B	1.65	0.8								
	LGCD-11C	1.5	1								
	LGCD-11D	1.15	1.3								
	LGCD-11E	0.9	1.5								
3	LGCD-15A	2.35	0.7	15	70±3	V belt/Direct	Ambient temperature +10°C	1-2ppm	G1	1060×700×1200	370
	LGCD-15B	2.3	0.8								
	LGCD-15C	2.05	1								
	LGCD-15D	1.65	1.3								
	LGCD-15E	1.1	1.5								
4	LGCD-185A	3.1	0.7	18.5	72±3	V belt/Direct	Ambient temperature +10°C	1-2ppm	G1	1200×850×1200	405
	LGCD-185B	3	0.8								
	LGCD-185C	2.6	1								
	LGCD-185D	2	1.3								
	LGCD-185E	1.8	1.5								
5	LGCD-22A	3.6	0.7	22	72±3	V belt/Direct	Ambient temperature +10°C	1-2ppm	G1	1200×850×1200	470
	LGCD-22B	3.5	0.8								
	LGCD-22C	3.2	1								
	LGCD-22D	2.4	1.3								
	LGCD-22E	1.95	1.5								
6	LGCD-30A	5.2	0.7	30	72±3	V belt/Direct	Ambient temperature +10°C / Cooling water temperature +10°C	1-2ppm	G1-1/2	1400×1000×1300	715
	LGCD-30B	5	0.8								
	LGCD-30C	4.5	1								
	LGCD-30D	3.6	1.3								
	LGCD-30E	3	1.5								
7	LGCD-37A	6.7	0.7	37	72±3	V belt/Direct	Ambient temperature +10°C / Cooling water temperature +10°C	1-2ppm	G1-1/2	1400×1000×1300	785
	LGCD-37B	6.6	0.8								
	LGCD-37C	5.8	1								
	LGCD-37D	4.8	1.3								
	LGCD-37E	3.6	1.5								
8	LGCD-45A	7.7	0.7	45	72±3	V belt/Direct	Ambient temperature +10°C / Cooling water temperature +10°C	1-2ppm	G1-1/2	1400×1000×1300	820
	LGCD-45B	7.6	0.8								
	LGCD-45C	7	1								
	LGCD-45D	5.8	1.3								
	LGCD-45E	4.7	1.5								
9	LGCD-55A	10.5	0.7	55	76±3	V belt/Direct	Ambient temperature +10°C / Cooling water temperature +10°C	1-2ppm	G2	1850×1300×1450	1200
	LGCD-55B	10	0.8								
	LGCD-55C	9	1								
	LGCD-55D	7.8	1.3								
	LGCD-55E	5.8	1.5								

10	LGCD-75A	13.6	0.7	75	76±3	V belt/Direct	Ambient temperature +10°C / Cooling water temperature +10°C	1-2ppm	G2	1850×1300×1450	1400
	LGCD-75B	13	0.8								
	LGCD-75C	11.5	1								
	LGCD-75D	9.8	1.3								
	LGCD-75E	7.6	1.5								
11	LGCD-90A	17	0.7	90	76±3	V belt/Direct	Ambient temperature +10°C / Cooling water temperature +10°C	1-2ppm	G2-1/2	2100×1300×1450	1570
	LGCD-90B	15.3	0.8								
	LGCD-90C	14	1								
	LGCD-90D	12	1.3								
	LGCD-90E	9.5	1.5								
12	LGCD-110A	21.5	0.7	110	79±3	V belt/Direct	Ambient temperature +10°C / Cooling water temperature +10°C	1-2ppm	G2-1/2	2540×1640×1800	1760
	LGCD-110B	20.5	0.8								
	LGCD-110C	17.5	1								
	LGCD-110D	14.5	1.3								
	LGCD-110E	12	1.5								
13	LGCD-132A	24.5	0.7	132	79±3	V belt/Direct	Ambient temperature +10°C / Cooling water temperature +10°C	1-2ppm	G2-1/2	2540×1640×1800	2200
	LGCD-132B	23.5	0.8								
	LGCD-132C	21	1								
	LGCD-132D	17.5	1.3								
	LGCD-132E	14.5	1.5								
14	LGCD-160A	29.2	0.7	160	79±3	Direct	Ambient temperature +10°C / Cooling water temperature +10°C	1-2ppm	DN80	2540×1640×1800	2400
	LGCD-160B	28	0.8								
	LGCD-160C	26	1								
	LGCD-160D	22	1.3								
15	LGCD-200A	37.5	0.7	200	79±3	Direct	Ambient temperature +10°C / Cooling water temperature +10°C	1-2ppm	DN80	3150×1800×2100	3300
	LGCD-200B	36	0.8								
	LGCD-200C	33	1								
	LGCD-200D	25	1.3								
16	LGCD-250A	46.5	0.7	250	79±3	Direct	Ambient temperature +10°C / Cooling water temperature +10°C	1-2ppm	DN100	3150×1800×2100	3600
	LGCD-250B	45	0.8								
	LGCD-250C	40	1								
	LGCD-250D	32	1.3								
17	LGCD-280A	52	0.7	280	79±3	Direct	Ambient temperature +10°C / Cooling water temperature +10°C	1-2ppm	DN100	3450×2000×2200	5700
	LGCD-280B	49.2	0.8								
	LGCD-280C	45	1								
	LGCD-280D	41.3	1.3								
18	LGCD-315A	60.6	0.7	315	79±3	Direct	Ambient temperature +10°C / Cooling water temperature +10°C	1-2ppm	DN150	3450×2000×2200	6800
	LGCD-315B	56.5	0.8								
	LGCD-315C	50.5	1								
	LGCD-315D	45	1.3								
19	LGCD-355A	71.5	0.7	355	79±3	Direct	Ambient temperature +10°C / Cooling water temperature +10°C	1-2ppm	DN150	4000×2050×2200	8500
	LGCD-355B	64.6	0.8								
	LGCD-355C	55.5	1								
	LGCD-355D	46.5	1.3								
20	LGD-600W	86	0.8	450	79±3	Direct	Cooling water temperature +10°C	1-2ppm	DN150	4500×2500×2200	12500
	LGD-600W	73.5	1								
21	LGD-670W	98.4	0.8	500	79±3	Direct	Cooling water temperature +10°C	1-2ppm	DN200	4500×2500×2200	12900
	LGD-670W	84	1								
22	LGD-750W		0.8	560	79±3	Direct	Cooling water temperature +10°C	1-2ppm	DN200		13500
	LGD-750W		1								

* Free air delivery for the complete package in accordance with ISO 1217, Appendix C, at 20°C ambient temperature and maximum pressure. **Emitted sound level as per PN8NTC2.3.

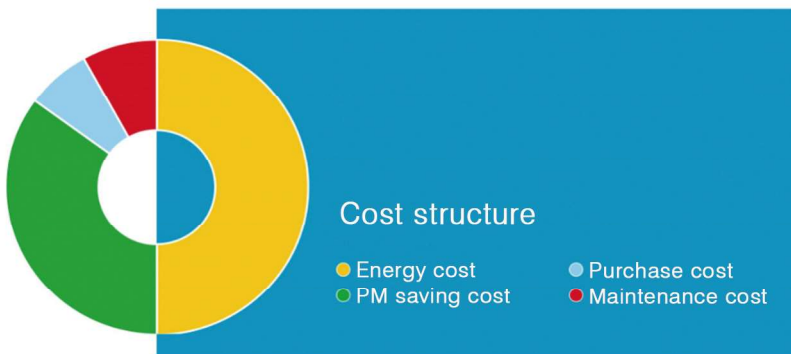
Note:

1. Can be customized according to the user's requirements: air-cooled / water-cooled type, oil content, the special outline dimension design according to need to order and technical agreement shall prevail;
2. Frequency converters (optional);
3. 1 year warranty for compressor unit, 2 years warranty for air end.

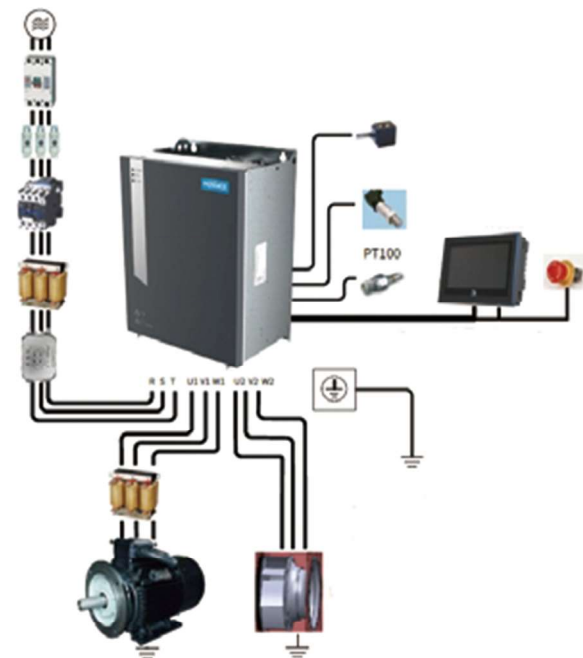


HAI ROTORCOMP VSD COMPRESSOR ADVANTAGES OF SHANGHAI ROTORCOMP PM COMPRESSOR

1. Adopted Rotor is made by Germany Processing Equipment; Adopting World Famous Brand SKF Bearing
2. Permanent Magnetic Motor Cooling Structure Patent Design, Application no: ZL 201320216379.0 Class F Insulation, Grade B Temperature rising.
3. Only choose best IP55 PM main motor with 1.2 service factor and PM fan motor for cooling(option) system, reach higher energy-saving standard: CN.CE-1306-06/16
4. Directly drive
5. Multi-touch controller to make it easier to control



1. High-efficiency PM motor saves energy about 6- 7%, Compared with three phase asynchronous motor.
2. Latest air end, one -shaft structure make it more compact, stable and high-efficiency.
3. Due to itelligent inverter technology, PM variable frequency air compressor saves energy up to 30%.
4. Has several patented technologies.
5. Industrial house-keeper with remote control system. fluctuation of the system, themore obvious the energy saving effect.



Control system

PRINCIPLE OF PERMANENT MAGNET VSD TECHNOLOGY:

The frequency control allows for a very large FAD regulation from 25% up to 100%[30(50)-150(200)Hz]. Adaptation to differing compressed air requirements is assured by infinite speed adjustment of the drive motor which is actuated by a frequency converter with simultaneous speed adjustment of the compressor air end.

Due to the extensive range of frequency adjustments, it is possible, even in case of little air consumption, to adapt the air delivery to the actual demand in compressed air and to almost completely avoid switching

Model	Air flow(m3/min)*				Power(kw)		In/outlet	Noise	Dimension	Weight
	8bar	10bar	13bar	15bar	Motor	Motor(Fan)		dB(A)**	LxWxH in mm	kg
LGCD-5.5 VP	0.22-0.87	0.19-0.75	0.16-0.61	0.15-0.50	5.5	0.09	G3/4	69	900x700x940	185
LGCD-7.5 VP	0.30-1.15	0.25-1.00	0.25-0.75	0.20-0.60	7.5	0.09	G3/4	69	900x700x940	215
LGCD-11 VP	0.45-1.65	0.40-1.50	0.33-1.15	0.30-0.90	11	0.18	G1	70	1060x700x1200	395
LGCD-15 VP	0.60-2.30	0.54-2.05	0.50-1.65	0.42-1.10	15	0.18	G1	70	1060x700x1200	415
LGCD-18.5 VP	0.75-3.00	0.73-2.60	0.63-2.00	0.53-1.80	18.5	0.37	G1	72	1200x850x1200	430
LGCD-22 VP	0.90-3.50	0.80-3.20	0.70-2.40	0.65-1.95	22	0.37	G1	72	1200x850x1200	495
LGCD-30 VP	1.25-5.00	1.15-4.50	0.95-3.60	0.85-3.00	30	0.75	G1-1/2	72	1400x1000x1300	740
LGCD-37 VP	1.65-6.60	1.45-5.80	1.20-4.80	1.10-3.60	37	0.75	G1-1/2	72	1400x1000x1300	805
LGCD-45 VP	1.90-7.60	1.75-7.00	1.45-5.80	1.25-4.70	45	1.1	G1-1/2	72	1400x1000x1300	845
LGCD-55 VP	2.50-10.0	2.25-9.00	2.00-7.80	1.65-5.80	55	1.1	G2	76	1850x1300x1450	1260
LGCD-75 VP	3.25-13.0	2.90-11.5	2.45-9.80	2.20-7.60	75	1.1	G2	76	1850x1300x1450	1460
LGCD-90 VP	4.00-15.3	3.80-14.0	3.00-12.0	2.75-9.50	90	2.2	G2	79	2100x1300x1500	1650
LGCD-110 VP	5.20-20.5	4.50-17.5	3.70-14.5	3.50-12.0	110	2.2	G2-1/2	79	2540x1640x1800	1850
LGCD-132 VP	5.90-23.5	5.30-21.0	4.75-17.5	4.00-14.5	132	2.2	G2-1/2	79	2540x1640x1800	2350
LGCD-160 VP	7.10-28.0	7.10-26.0	6.05-22.0	6.05-18.3	160	3.8	G2-1/2	80	2540x1640x1800	2490
LGCD-200 VP	9.05-36.0	9.05-33.0	7.15-25.0	7.15-21.0	200	7.6	DN80	80	3150x1800x2100	3390
LGCD-250 VP	11.3-45.0	11.3-40.0	9.25-32.0	8.5-28.0	250	7.6	DN80	81	3150x1800x2100	3690
LGCD-280 VP	13.5-49.2	13.5-45.0	11.5-41.3	9.5-32.0	280	11	DN100	81	3450x2000x2200	5790
LGCD-315 VP	15.5-56.5	15.5-50.5	12.5-45.0	12.0-36.0	315	11	DN100	83	3450x2000x2200	6890



LGHD HIGH PRESSURE SERIES SCREW COMPRESSOR



These advantages convince

- Compact design for reduced floor space
- Smooth, low vibration running (no foundations)
- Lowest operating noise level
- Continuous air supply (no pulsations)
- Belt drive or direct drive
- Designed for continuous duty
- Load-idling-operation or frequency controlled operation for variable delivery capacity
- Low maintenance cost
- Simple heat regeneration
- Range of suitable coolers available
- Operation with bio-degradeable and food-grade lubricants
- Wear-free compressor element
- Expert advice and service through a competent partner



Extensive standard delivery

- Sensors for the supervision
- Sensors for service
- Magnet valves for iding and discharge
- Cabling of all valves and sensors
- Electronic control system
- LED-display module for operating modes, interferences and required services

Target Markets

- PET bottle moulding
- Starting air for large diesel engines
- Coating techniques in the wood and glass industry
- Instrument air for power plants process air



Model	Capacity(m3/min)*		Power(kw)	Outlet	Noise	Dimension LxWxH in mm	Weight kg
	30bar	40bar	Motor		dB(A)**		
LGHD-15E	1.45	1.12	15	G3/4	63	1650x1150x1315	846
LGHD-18.5E	1.73	1.38	18.5		65		868
LGHD-22E	1.79	1.32	22		65		910
LGHD-30E	2.93	2.28	30	G1/2	66	1950x1420x1460	1217
LGHD-37E	3.65	2.83	37		67		1230
LGHD-45E	4.71	3.57	45		68		1286
LGHD-55E	6.02	4.50	55	G1	70	2050x1460x1500	2000
LGHD-75E	7.91	6.52	75	G1-1/4	73	2250x1600x1800	3820
LGHD-90E	10.08	7.54	90		73		3900
LGHD-110E	12.20	9.71	110		78		3970
LGHD-132E	14.20	11.68	132	G1-1/2	78	2400x1700x1655	4080
LGHD-160E	17.30	14.22	160	G1-1/4	78	2660x1800x1820	6450
LGHD-185E	19.60	16.61	185		81		6520
LGHD-200E	22.80	17.90	200		81		6580
LGHD-250E	28.21	22.81	250		82		7200

* Free air delivery for the complete package in accordance with ISO 1217, Appendix C, at 20°C ambient temperature and maximum pressure. **Emitted sound level as per PN8NTC2.3.

Note:

1. Can be customized according to the user's requirements: air-cooled / water-cooled type, oil content, the special outline dimension design according to need to order and technical agreement shall prevail;
2. The company to change the above parameters subject to change, without prior notice.



COOPERATIVE PARTNERS



SHANGHAI ROTORCOMP SCREW COMPRESSOR CO., LTD

SHANGHAI FACTORY:

Add: No.188 road Fengjing town, Jinshan District, Shanghai, China

Tel: +86-021-67150020

Fax: +86-21-67150020

M: +86 18049981656

E-mail: trade@rotorcomp.com.cn

Website: www.rotorcompressor.com

SHANXI FACTORY:

Add: No.5 Changzhi County, Hao Jia road, Xinyi Village, Shanxi, China

Tel: +86-0355-5859699 Fax: +86-0355-5859699

BEIJING FACTORY:

Add: No.18 Shuike road, Nankou town, Changping district, Beijing

Tel: +86-010-51013090

Fax: +86-010-51013590